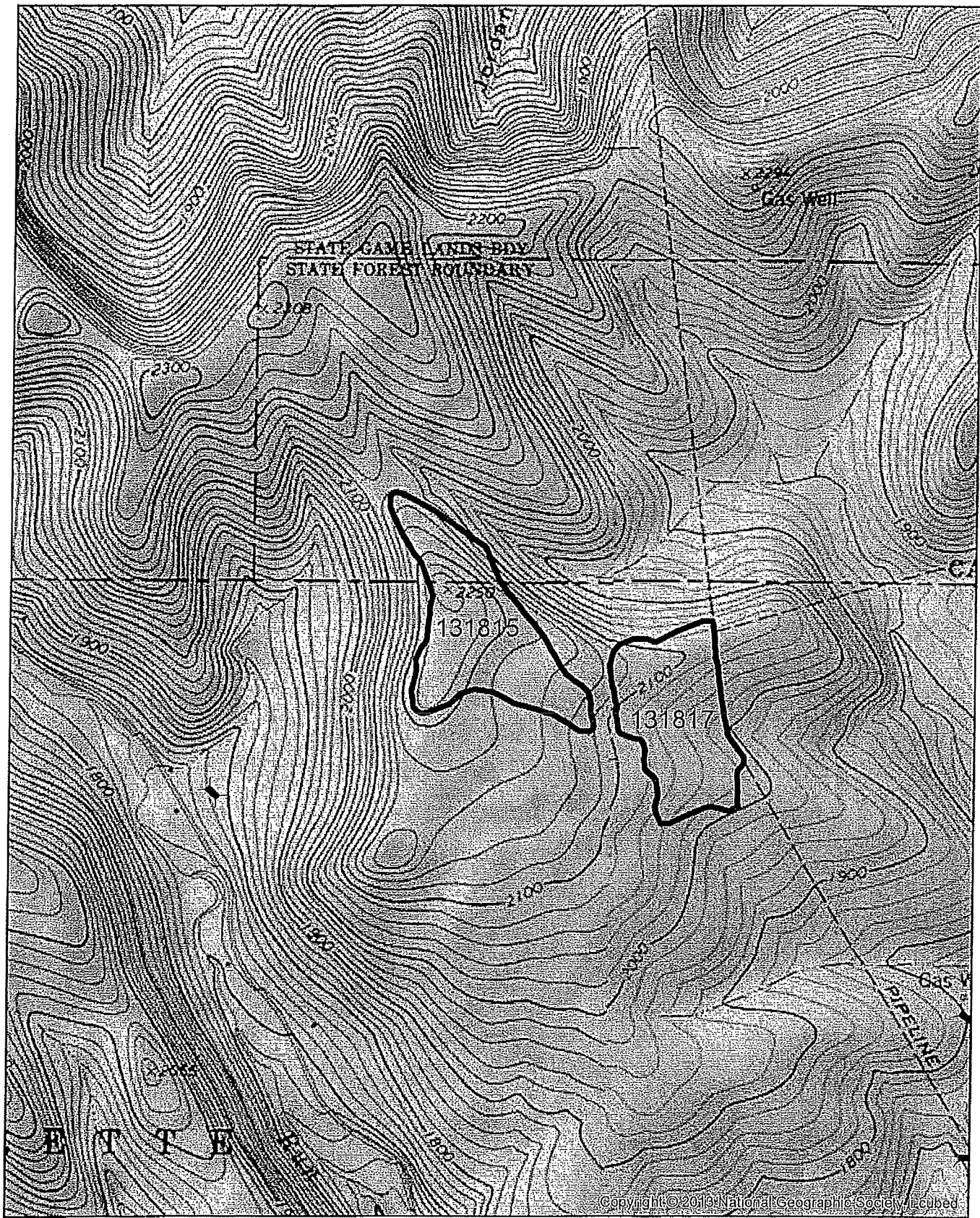


Proposed Fence Dismantling Projects 131815 and 131817
48 Acres and 40 Acres
7600 feet severe difficulty and 5900 feet severe difficulty
Benzette Township, Elk County
Rathbun and West Creek Topo Quads



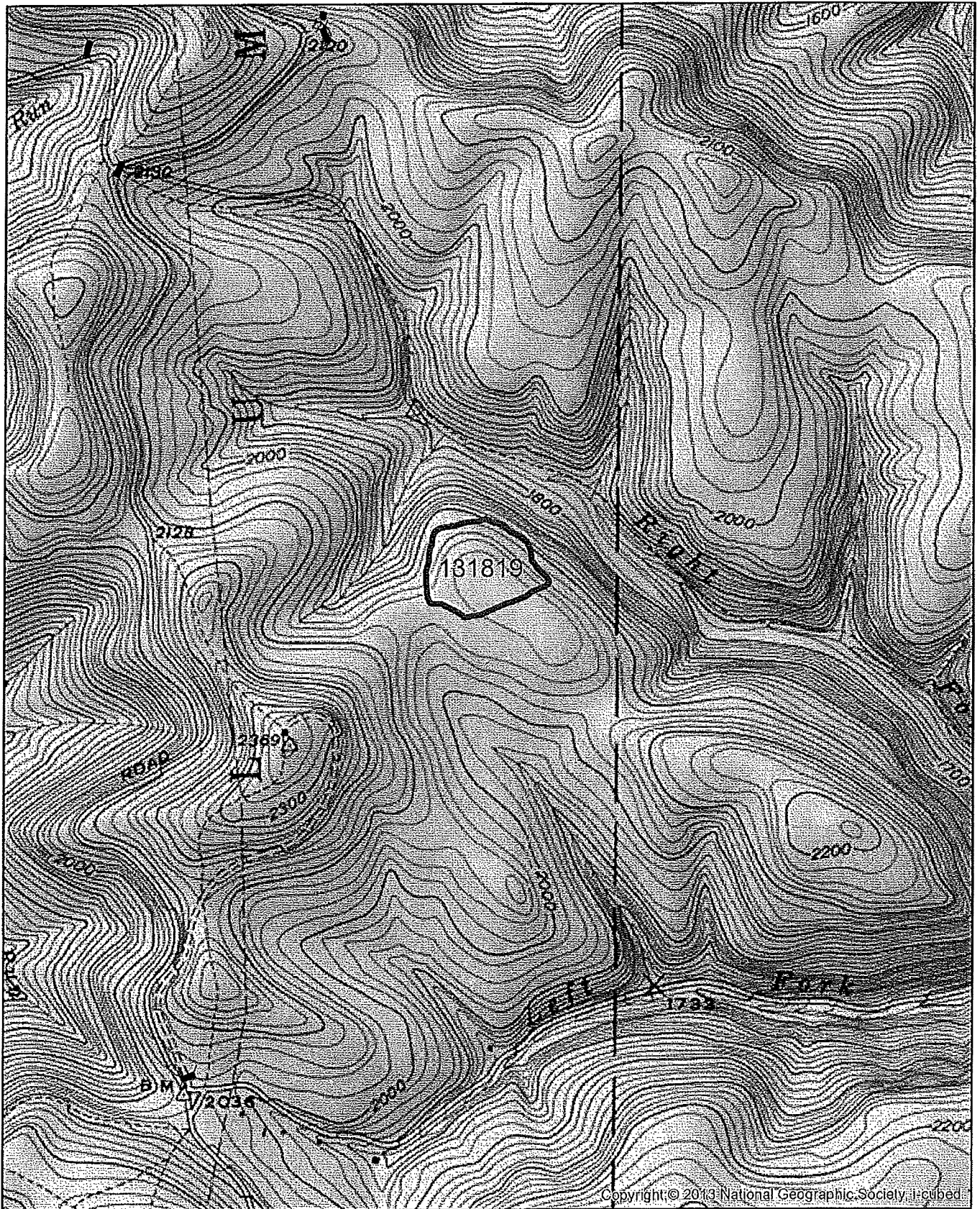
Scale 1 inch = 1320 feet



Proposed Fence Dismantling Projects 131819
19 Acres
3534 feet moderate difficulty
Lumber Township, Cameron County
Sinnemahoning Topo Quad



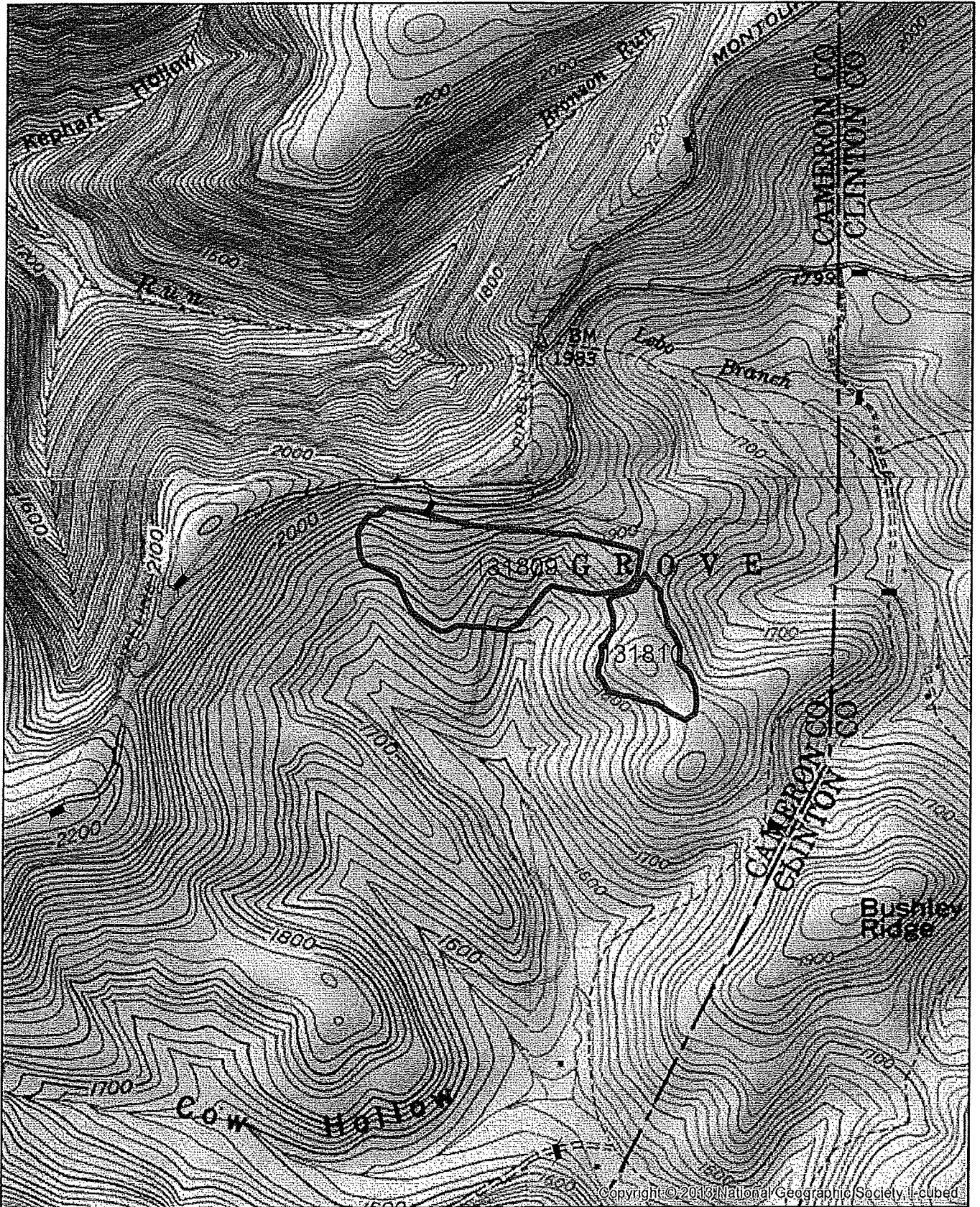
Scale 1 inch = 1320 feet



Proposed Fence Dismantling Projects 131809 and 131810
49 Acres and 20 Acres
6900 feet severe difficulty and 4000 feet severe difficulty
Grove Township, Cameron County
Keating and Sinnemahoning Topo Quads



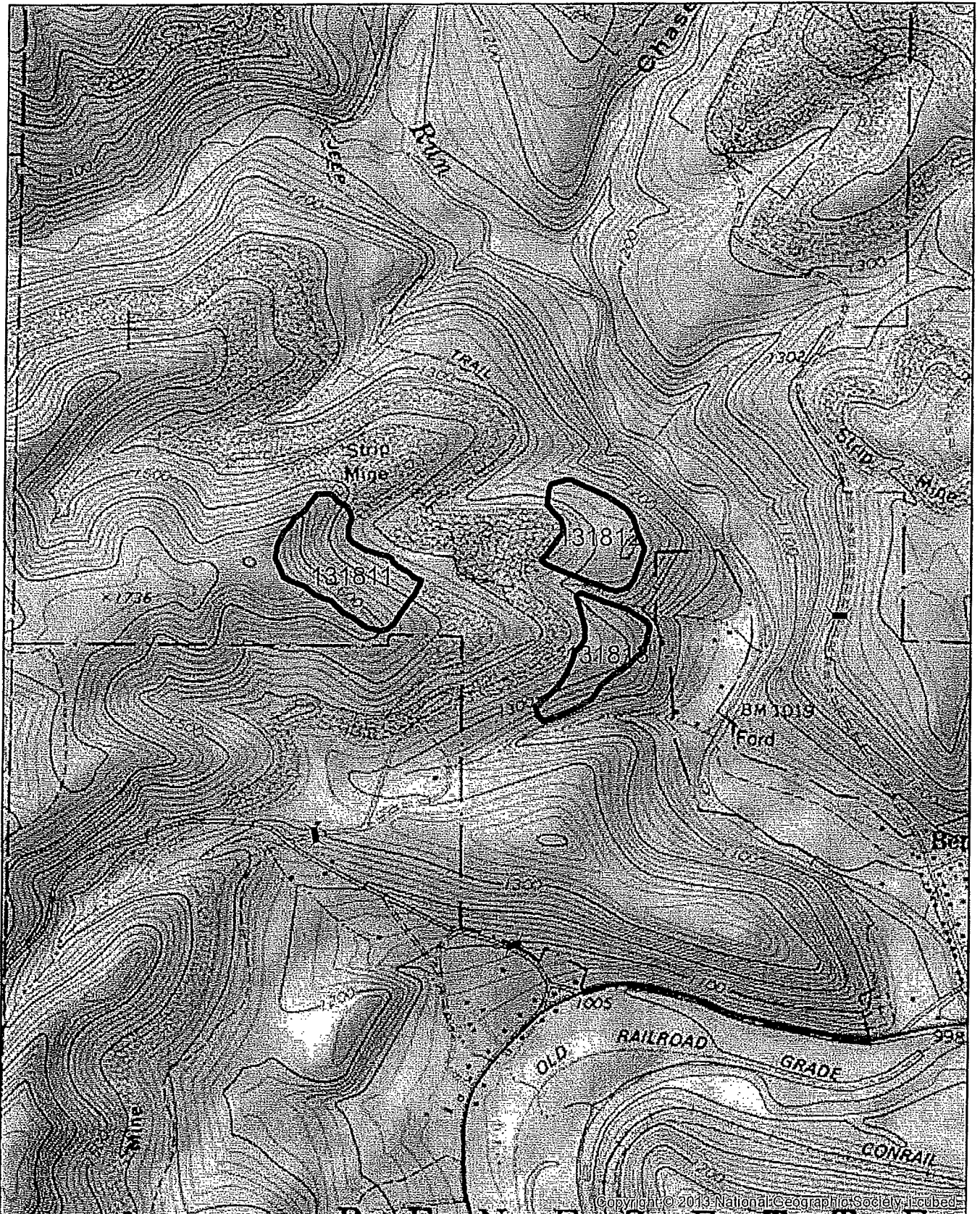
Scale 1 inch = 1320 feet



Proposed Fence Dismantling Projects 131811, 131812, and 131813
23 Acres, 17 Acres, and 14 Acres
4500 feet, 3600 feet, and 3900 feet all severe difficulty
Benzette Township, Elk County
Weedville Topo Quad



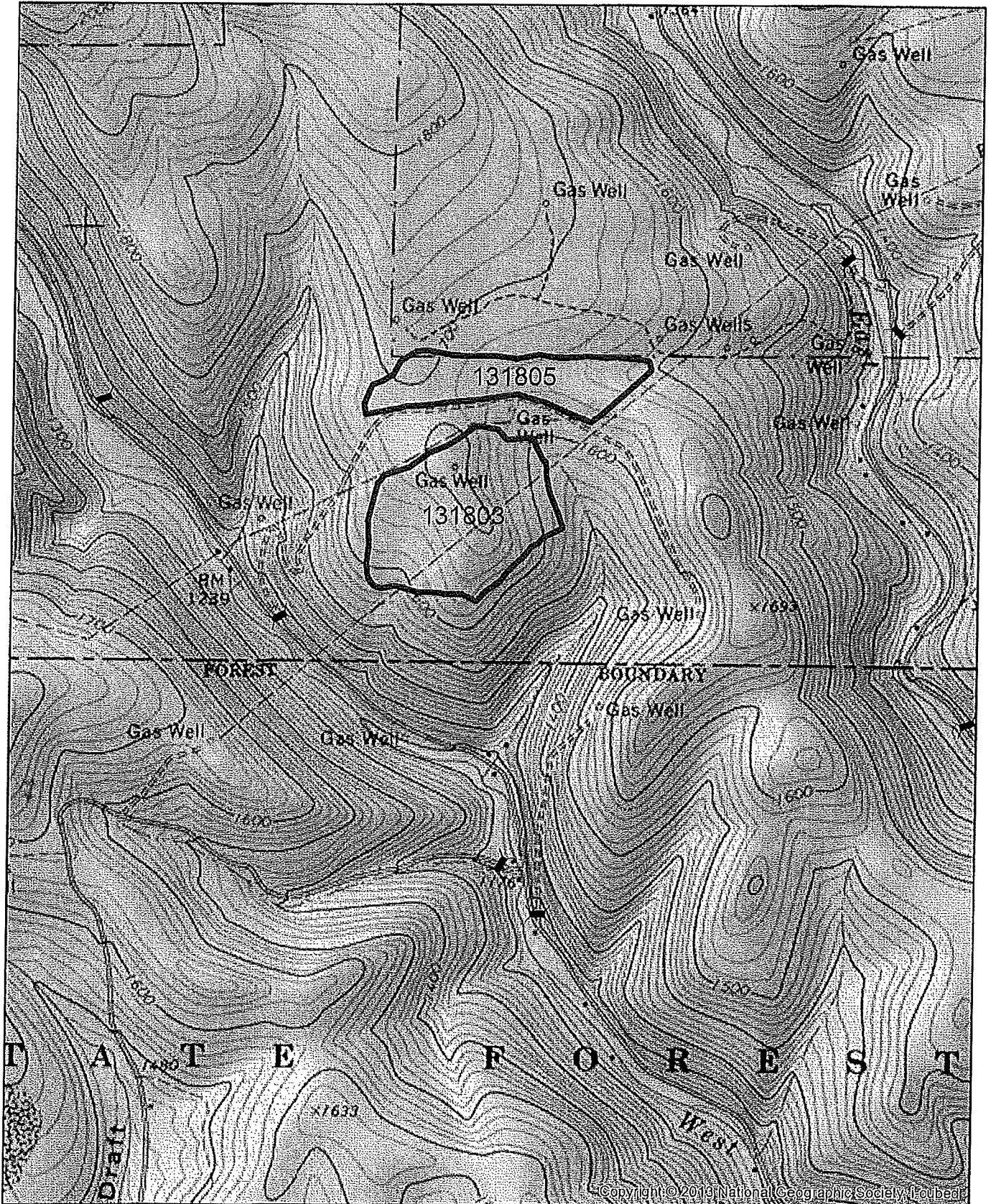
Scale 1 inch = 1320 feet



Proposed Fence Dismantling Projects 131803 and 131805
55 acres and 29 Acres
6100 feet severe difficulty and 6500 feet moderate difficulty
Shippen Township, Cameron County
West Creek Topo Quad



Scale 1 inch = 1320 feet



Proposed Fence Dismantling Project 131804
64 Acres
7000 feet severe difficulty
Shippen Township, Cameron County
West Creek Topo Quad



Scale 1 inch = 1320 feet

